



Load Pin Shackle

Robust, compact high tensile steel design from 2Te to 2000Te.



Options



Wireless & Internal Antenna



Matched Telemetry Displays



Rent this item



Cabled with 49.2ft flying cable



Data Logging Software Available



ATEX version

Ideal for precise tensile load monitoring for your lifting, static, pulling or weighing applications. Suitable for all industry sectors including marine, onshore, offshore and subsea.

You can be confident each shackle and load pin is up to the task with the certified load test before delivery.

Displays & Portable Case

Rugged case design with foam compartments to firmly hold the load shackle, telemetry display, spare set of batteries. Can also accommodate connecting cable for wired units.

- Lockable case
- Plastic case available from 3.25Te – 35Te
- Transport case from 55Te – 85Te
- Wooden case from 100Te or larger



Load Cell Data Logging

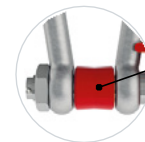
LMS-LOG100 Advanced data logging software provides real time monitoring of up to 100 load cell devices simultaneously.

Remotely access your data quickly and easily from a computer, tablet & smart phone via web browser. Export data in standard JSON or CSV formats with customisable reporting to suit your needs.

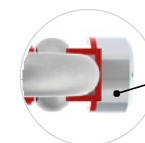


Features

- Design uses VanBeest™ Greenpin® shackles as standard, others available on request
- Load pins from high-strength stainless steel
- Safety factor of 5:1
- On request up to 12 shackles can be linked to the hand-held display for individual or summed load values
- Integral signal conditioning
- Subsea variants available on request
- Special design available on request



Centralising bobbin for improved load cell accuracy



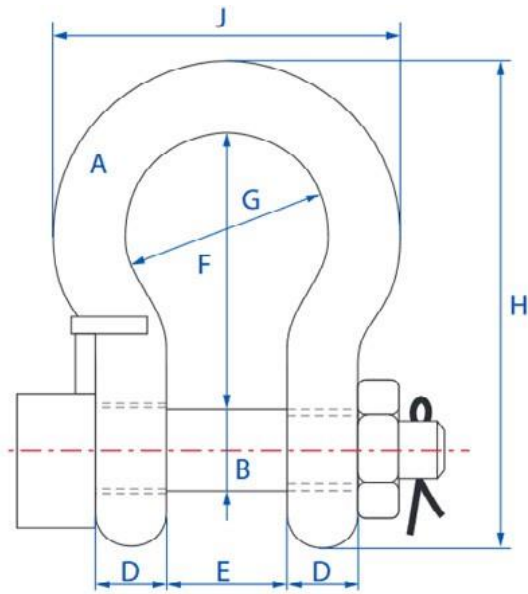
Integrated aerial for added protection



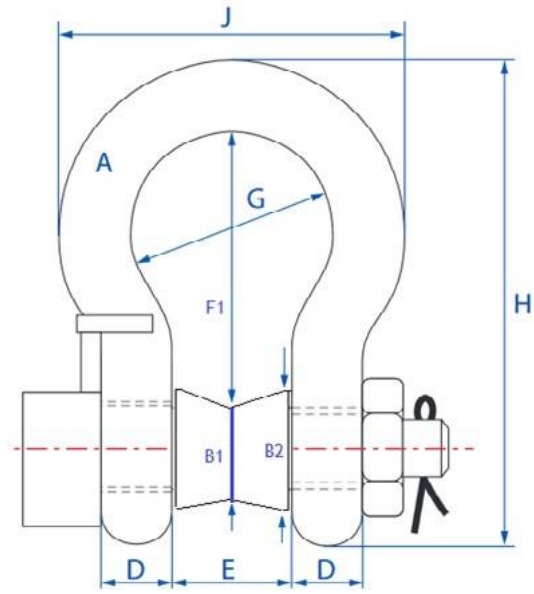
DISTRIBUIDOR AUTORIZADO ESPAÑA
Tel. +34 91 683 03 00 - ventas@sercables.com



www.loadmonitoringsystems.com



Pin Without Bobbin



Pin With Bobbin

Standard Designs (Van Beest Shackles)

Capacity Te	Dimensions (mm)									Weight (kg)	Size	B1	B2	F1
	a	b	d	e	f	g	h	j	With Bobbin dimensions					
3.25	16	19	16	27	64	43	110	75	0.9	3.25	33	38	55.5	
4.75	19	22	19	31	76	51	129	89	1.18	4.75	42	46	64.5	
6.5	22	25	22	36	83	58	144	102	1.77	6.5	44	50	72	
13.5	35	38	35	57	133	92	227	162	6.54	13.5	64	70	118.5	
25	45	50	45	74	178	126	300	216	14.22	23	79	89	161	
35	50	57	50	83	197	138	331	238	19.53	35	87.5	97	178.25	
55	65	70	65	105	260	180	433	310	39.59	55	111	121	237	
85	75	83	73	127	329	190	527	340	62	85	121	138	306	
120	95	95	95	147	400	238	647	428	110	120	141	158	377	
150	105	108	105	169	410	275	688	485	160	150	181	198	372	
200	120	130	120	179	513	290	838	530	235	200	201	218	472.5	
250	130	140	130	205	554	305	904	565	295	250	211	228	513.5	
300	140	150	140	205	618	305	996	585	368	300	228	245	574	
400	170	175	164	231	668	325	1114	665	560	400	255	272	625.5	
500	180	185	164	256	718	350	1190	710	685	500	271	288	672.5	
600	200	205	189	282	718	375	1243	775	880	600	275	305	680.5	
700	210	215	204	308	718	400	1263	820	980	700	288.5	325	678.75	
800	210	220	204	308	718	400	1270	820	1100	800	306	345	670	
900	220	230	215	328	718	420	1296	860	1280	900	336	395	660	
1000	240	240	215	349	718	420	1336	900	1460	1000	366	416	655	

Special Designs (Crosby Shackles)

Capacity Te	Dimensions (mm)									Weight (kg)
	a	b	d	e	f	g	h	j		
6.5	22.4	25.4	22.4	36.6	84	57.9	148.1	102.4	1.58	
25	45.72	50.8	49	73.2	177.8	127	313.4	225	13.37	